



# GAT MONTHLY MEMBERSHIP PROGRESS REPORT

Results as of: 6/30/2023

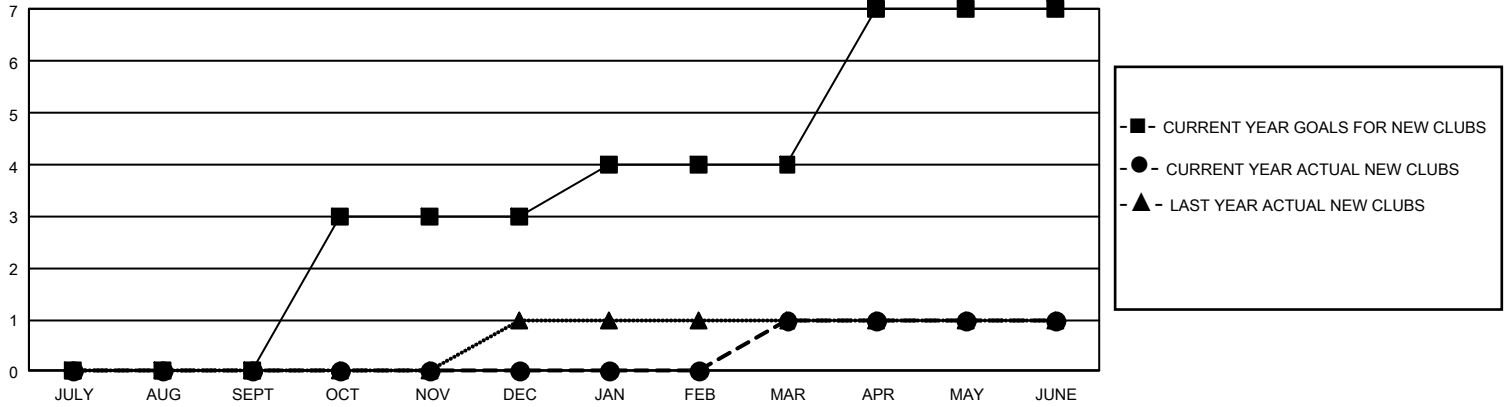
## GMT Constitutional Area 1, Group O

REPORT DOES NOT INCLUDE CLUBS IN UNDISTRICTED AREAS.

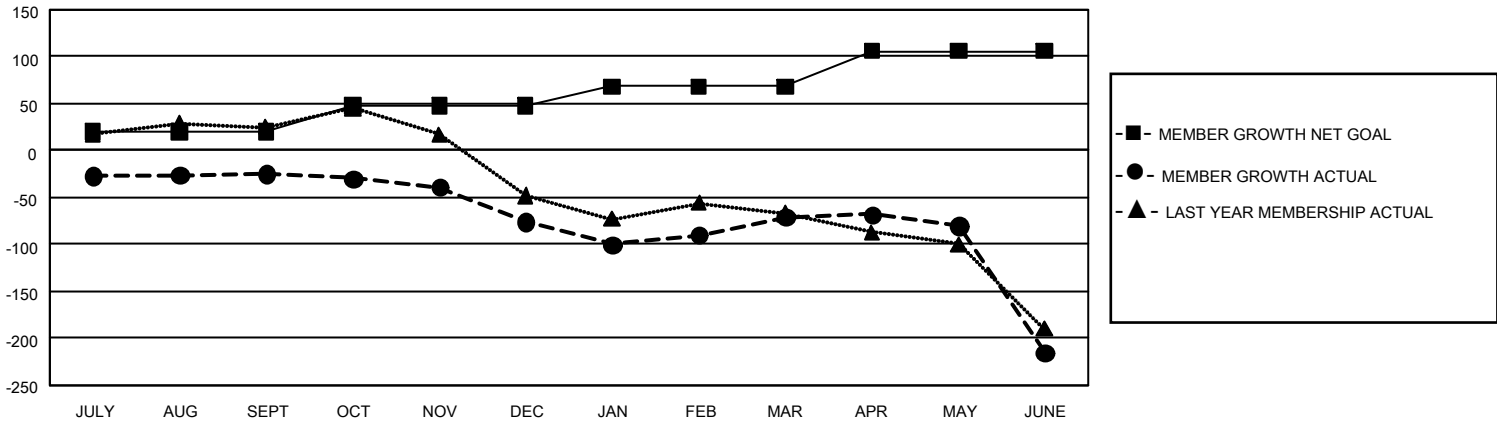
Clubs			
RESULTS FOR 2022-2023			
QUARTER	NEW CLUB GOAL	NEW CLUBS	DROPPED CLUBS
JULY/AUG/SEPT	0	0	2
OCT/NOV/DEC	9	0	1
JAN/FEB/MAR	3	1	3
APR/MAY/JUNE	9	0	3

Members			
RESULTS FOR 2022-2023			
QUARTER	MEMBER GROWTH NET GOAL	MEMBER GROWTH ACTUAL	DROPPED MEMBERS ACTUAL (including transfers)
JULY/AUG/SEPT	20	93	105
OCT/NOV/DEC	28	99	134
JAN/FEB/MAR	20	144	121
APR/MAY/JUNE	38	117	234

GOALS AND ACTUAL NEW CLUBS CUMULATIVE



GOALS AND ACTUAL MEMBERS CUMULATIVE



<b>DROPPED CLUBS: 9</b>	97 CLUBS OF 149 ADDED 1 OR MORE NEW MEMBERS	<b><u>GENDER DISTRIBUTION</u></b>	
		MALE 2,376 (62.56%) FEMALE 1,419 (37.36%) NON BINARY 0 (0.00%) PREFER NOT TO ANSWER 3 (0.08%)	
<b><u>DROPPED MEMBERS</u></b>		TOTAL FAMILY UNIT MEMBERS 833	
DECEASED 65 CLUB CANCELLED 21 OTHER 508 <b>TOTAL 594</b>	<a href="#">CLICK HERE FOR CUMULATIVE MEMBERSHIP DATA</a>	FAMILY MEMBERS PAYING HALF DUES 429	